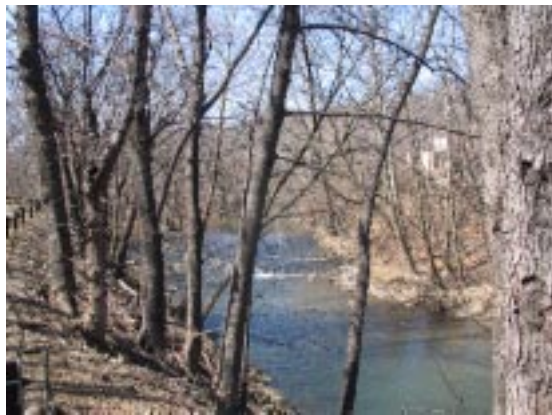
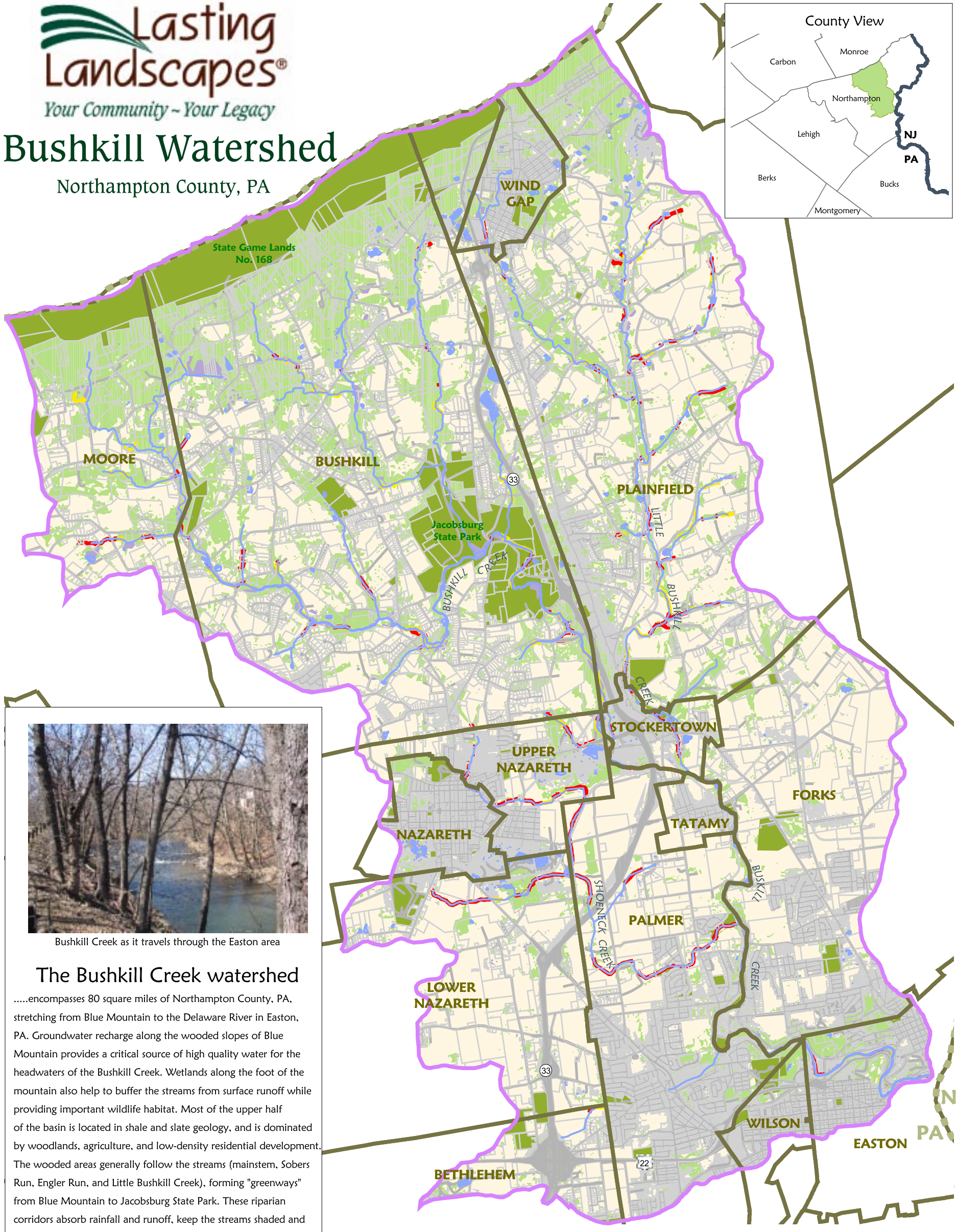
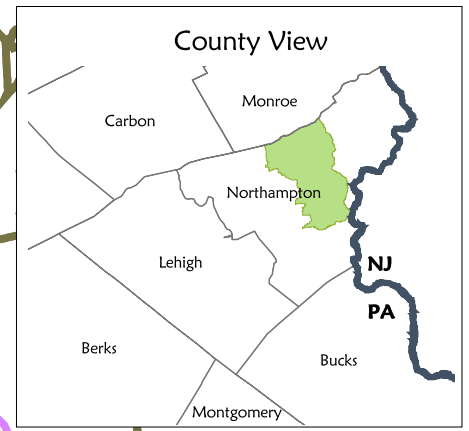


Bushkill Watershed

Northampton County, PA



Bushkill Creek as it travels through the Easton area

The Bushkill Creek watershed

.....encompasses 80 square miles of Northampton County, PA, stretching from Blue Mountain to the Delaware River in Easton, PA. Groundwater recharge along the wooded slopes of Blue Mountain provides a critical source of high quality water for the headwaters of the Bushkill Creek. Wetlands along the foot of the mountain also help to buffer the streams from surface runoff while providing important wildlife habitat. Most of the upper half of the basin is located in shale and slate geology, and is dominated by woodlands, agriculture, and low-density residential development. The wooded areas generally follow the streams (mainstem, Sobers Run, Engler Run, and Little Bushkill Creek), forming "greenways" from Blue Mountain to Jacobsburg State Park. These riparian corridors absorb rainfall and runoff, keep the streams shaded and cool, and provide important habitat for flora and fauna.

The peaceful Bushkill Creek meanders through Jacobsburg State Park



- Bushkill Creek Watershed Boundary
- Both Sides of stream in need of riparian buffer
- One Side of stream in need of riparian buffer
- Stream
- Street Right Of Way
- Forest Land
- Open Water
- Park
- Residential, Commercial or Industrial Land
- Agricultural Land
- Urban Recreational Grassland
- Wetland
- Parcel Boundary
- Municipal Boundary
- County Boundary

Data Sources: Lehigh Valley Planning Commission, USGS



Heritage Conservancy
85 Old Dublin Pike
Doylestown, PA 18901
215-345-7020
www.heritageconservancy.org

0 7000 14000 Feet

January 2005

